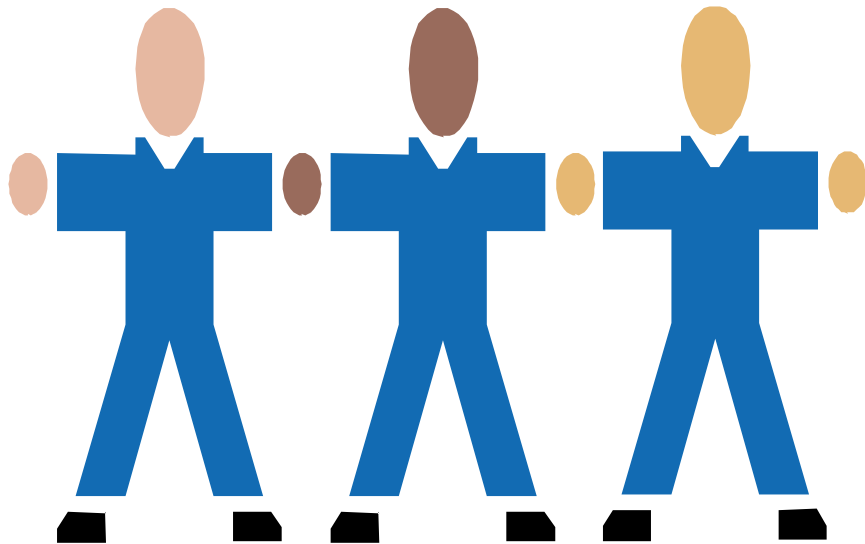




THE CHURCH:



- The “universal Church”, “collective Body”: Acts 2:41, 47; I Cor. 12:12-14
- The “local church”, congregation: Acts 20:28; Rom. 16:16; Rev. 1:11



“PLACING MEMBERSHIP”

What is it?

Do we find it in the Bible?

Is it necessary?



“Placing Membership” – What is it?

- It is the acknowledgment by an individual of their willingness to submit to the oversight and authority of the local congregation, and to support the local work and brethren.
- It is the acknowledgment by the congregation that this individual is in good standing and therefore extends to them the benefits of being a member.



“Placing Membership” – Do we find it in the Bible?

- We do find the principle in Scripture. See Acts 9:26-28, 11:22-26, 13:1-3, 14:26-28
- Sometimes “letters of commendation” were written. See Acts 18:27-28, II Cor. 3:1



“Placing Membership” – Is it necessary?

- The elders (congregation) must know who is within their authority to protect, discipline. See [Acts 20:28-30](#), [Heb. 13:17](#); [I Cor. 5:4-5, 7](#)
- The brethren must know who is a faithful servant to encourage and edify, esteem. See [Heb. 10:24-25](#), [I Thess. 5:12-13](#)
- Who should be helped? [Acts 6:1](#), [I Tim. 5](#)



“Placing Membership” – Why do some refuse it?

- There is no specific reference to it. However, there was only one sound church in each city, not multiples. We have multiple examples of brethren “joining” themselves to a church when they move to a new city.
- They have been withdrawn from (rightfully). They are unwilling to submit to oversight. They do not want to work. Etc...



THE CHURCH:

- Each part must do “its share” – Eph. 4:4-6, 11-16, 32

